

PART	QTY	DEPTH	TYPE
HHUS410	1		FMH
HU4142	1		FMH
UT414	8	13 3/4"	FMH
14RB	13	14"	RIMBOARD
16RB	5	16"	RIMBOARD
1T314	3	14"	TMH

MARK	PIES & SIZE	LENGTH	SPACING	BEARING REQ'S
2B-1	(1) 11 7/8"	19' 0"	.	
2B-2	(1) 16"	13' 0"	.	
2B-3	(1) 14"	15' 0"	.	
2B-4	(2) 14"	20' 0"	C	
H-1	(2) 2x12"	.	.	By Others
H-2	(2) 11 7/8"	9' 0"	A	
GH	(2) 24"	24' 0"	C	7 1/2"

MARK	DEPTH	QTY	LENGTH	COMMENTS
#1	14"	(1)	19' 6"	LP-20+
#1A	14"	(10)	16' 6"	LP-42
#1B	14"	(1)	17' 6"	LP-20+
#1C	14"	(1)	9' 0"	LP-20+
#2	14"	(7)	30' 0"	LP-20+
#2A	14"	(3)	21' 0"	(1) Trip LP-20+
#2B	14"	(1)	12' 6"	LP-20+
#2C	14"	(3)	29' 0"	LP-20+
#3	14"	(17)	14' 6"	LP-20+
#3A	14"	(2)	17' 6"	LP-42
#3B	14"	(2)	31' 6"	LP-20+
#BLK	14"	(3)	0' 2 1/2 - 7/16"	LP-20+

MARK	DEPTH	QTY	LENGTH	COMMENTS
#A	16"	(9)	21' 0"	LP-56
#B	16"	(5)	21' 0"	LP-32

GENERAL NOTES:

- 1) TOP CHORD OR JOISTS ARE PAINTED RED AT NUMBERED END. PLACE PAINTED END AS NOTED.
- 2) FOLLOW SPECIAL SPACING AND LOCATION DIMENSIONS FOR EXTRAS OR SHIFTED JOISTS AS NOTED.
- 3) ALL INTERIOR WALL TOP PLATES MUST BE LEVEL WITH OUTSIDE WALL CONSTRUCTION LINES ON BOTH SIDES.
- 4) PROVIDE SOLID SUPPORT BELOW ALL BEAM AND JOIST BEARING POINTS IN WALL AND JOIST SPACES.
- 5) LOCATE CORNER STUDS IN JOIST SPACE DIRECTLY BELOW HEADER JACKS AT ALL FIRST JOIST BEARING POINTS.
- 6) INSTALL NAILS IN ALL HOLDS PROVIDED IN JOIST HANGERS EXCEPT AT BOTTOM CHORD SEAT BEGORE SETTING JOISTS.
- 7) IMPORTANT NOTE: NO STRUCTURAL ANALYSIS CONDUCTED. THEY ARE CONSIDERED TO BE ADEQUATE TO SUPPORT THE APPLIED LOADS.

PLYWOOD DECKING:

INTERIOR DECKING SHALL BE 1/2" A-S4 STRESS RATED PLYWOOD. EXTERIOR DECKING SHALL BE 3/4" A-S4 STRESS RATED PLYWOOD. CONTINUOUS OVER A DIMENSION PERPENDICULAR TO THE LONG DIMENSION. JOISTS WITH THE LONG DIMENSION SPACED TO COMPPLY WITH THE MINIMUM JOIST SURFACE BEFORE GLUING. APPLY ONLY ENOUGH GLUE FOR ONE OR TWO PANELS AT JOIST BEARING POINTS. GLUE SHALL BE ADAPPLIED TO ALL JOIST BEARING POINTS. GLUE SHALL BE ADAPPLIED TO ALL JOIST BEARING POINTS. GLUE SHALL BE ADAPPLIED TO ALL JOIST BEARING POINTS.

PLAN LEGEND:

- WALL ABOVE FINISH LEVEL
- WALL BELOW FINISH LEVEL
- STACKED WALLS ABOVE & BELOW
- SPECIAL WALL (TOP PLATE) HEIGHT
- POINT LOAD (SEE NOTE 5)
- BEAM - FLUSH OR DROPPED (HEADER, CEILING, OR ROOF)
- JOIST HANGER
- T.M.H. - TOP MOUNT HANGER
- F.M.H. - FACE MOUNT HANGER
- SHIFTS JOIST TO LOCATION DIMENSIONED SUPPORT (FORNITURE)
- CLONED ITEMS ARE BEAMS, HEADERS (HEADER, CEILING, OR ROOF)
- CEILING JOIST DIRECTION

NOTES:

A JOIST ADDED TO THE LAYOUT IN ADDITION TO THE LAYOUT SHOWN.

PL-1A, PL-1B, PL-1C, PL-1D, PL-1E, PL-1F, PL-1G, PL-1H, PL-1I, PL-1J, PL-1K, PL-1L, PL-1M, PL-1N, PL-1O, PL-1P, PL-1Q, PL-1R, PL-1S, PL-1T, PL-1U, PL-1V, PL-1W, PL-1X, PL-1Y, PL-1Z, PL-1AA, PL-1AB, PL-1AC, PL-1AD, PL-1AE, PL-1AF, PL-1AG, PL-1AH, PL-1AI, PL-1AJ, PL-1AK, PL-1AL, PL-1AM, PL-1AN, PL-1AO, PL-1AP, PL-1AQ, PL-1AR, PL-1AS, PL-1AT, PL-1AU, PL-1AV, PL-1AW, PL-1AX, PL-1AY, PL-1AZ, PL-1BA, PL-1BB, PL-1BC, PL-1BD, PL-1BE, PL-1BF, PL-1BG, PL-1BH, PL-1BI, PL-1BJ, PL-1BK, PL-1BL, PL-1BM, PL-1BN, PL-1BO, PL-1BP, PL-1BQ, PL-1BR, PL-1BS, PL-1BT, PL-1BU, PL-1BV, PL-1BW, PL-1BX, PL-1BY, PL-1BZ, PL-1CA, PL-1CB, PL-1CC, PL-1CD, PL-1CE, PL-1CF, PL-1CG, PL-1CH, PL-1CI, PL-1CJ, PL-1CK, PL-1CL, PL-1CM, PL-1CN, PL-1CO, PL-1CP, PL-1CQ, PL-1CR, PL-1CS, PL-1CT, PL-1CU, PL-1CV, PL-1CW, PL-1CX, PL-1CY, PL-1CZ, PL-1DA, PL-1DB, PL-1DC, PL-1DD, PL-1DE, PL-1DF, PL-1DG, PL-1DH, PL-1DI, PL-1DJ, PL-1DK, PL-1DL, PL-1DM, PL-1DN, PL-1DO, PL-1DP, PL-1DQ, PL-1DR, PL-1DS, PL-1DT, PL-1DU, PL-1DV, PL-1DW, PL-1DX, PL-1DY, PL-1DZ, PL-1EA, PL-1EB, PL-1EC, PL-1ED, PL-1EE, PL-1EF, PL-1EG, PL-1EH, PL-1EI, PL-1EJ, PL-1EK, PL-1EL, PL-1EM, PL-1EN, PL-1EO, PL-1EP, PL-1EQ, PL-1ER, PL-1ES, PL-1ET, PL-1EU, PL-1EV, PL-1EW, PL-1EX, PL-1EY, PL-1EZ, PL-1FA, PL-1FB, PL-1FC, PL-1FD, PL-1FE, PL-1FF, PL-1FG, PL-1FH, PL-1FI, PL-1FJ, PL-1FK, PL-1FL, PL-1FM, PL-1FN, PL-1FO, PL-1FP, PL-1FQ, PL-1FR, PL-1FS, PL-1FT, PL-1FU, PL-1FV, PL-1FW, PL-1FX, PL-1FY, PL-1FZ, PL-1GA, PL-1GB, PL-1GC, PL-1GD, PL-1GE, PL-1GF, PL-1GG, PL-1GH, PL-1GI, PL-1GJ, PL-1GK, PL-1GL, PL-1GM, PL-1GN, PL-1GO, PL-1GP, PL-1GQ, PL-1GR, PL-1GS, PL-1GT, PL-1GU, PL-1GV, PL-1GW, PL-1GX, PL-1GY, PL-1GZ, PL-1HA, PL-1HB, PL-1HC, PL-1HD, PL-1HE, PL-1HF, PL-1HG, PL-1HH, PL-1HI, PL-1HJ, PL-1HK, PL-1HL, PL-1HM, PL-1HN, PL-1HO, PL-1HP, PL-1HQ, PL-1HR, PL-1HS, PL-1HT, PL-1HU, PL-1HV, PL-1HW, PL-1HX, PL-1HY, PL-1HZ, PL-1IA, PL-1IB, PL-1IC, PL-1ID, PL-1IE, PL-1IF, PL-1IG, PL-1IH, PL-1II, PL-1IJ, PL-1IK, PL-1IL, PL-1IM, PL-1IN, PL-1IO, PL-1IP, PL-1IQ, PL-1IR, PL-1IS, PL-1IT, PL-1IU, PL-1IV, PL-1IW, PL-1IX, PL-1IY, PL-1IZ, PL-1JA, PL-1JB, PL-1JC, PL-1JD, PL-1JE, PL-1JF, PL-1JG, PL-1JH, PL-1JI, PL-1JJ, PL-1JK, PL-1JL, PL-1JM, PL-1JN, PL-1JO, PL-1JP, PL-1JQ, PL-1JR, PL-1JS, PL-1JT, PL-1JU, PL-1JV, PL-1JW, PL-1JX, PL-1JY, PL-1JZ, PL-1KA, PL-1KB, PL-1KC, PL-1KD, PL-1KE, PL-1KF, PL-1KG, PL-1KH, PL-1KI, PL-1KJ, PL-1KL, PL-1KM, PL-1KN, PL-1KO, PL-1KP, PL-1KQ, PL-1KR, PL-1KS, PL-1KT, PL-1KU, PL-1KV, PL-1KW, PL-1KX, PL-1KY, PL-1KZ, PL-1LA, PL-1LB, PL-1LC, PL-1LD, PL-1LE, PL-1LF, PL-1LG, PL-1LH, PL-1LI, PL-1LJ, PL-1LK, PL-1LL, PL-1LM, PL-1LN, PL-1LO, PL-1LP, PL-1LQ, PL-1LR, PL-1LS, PL-1LT, PL-1LU, PL-1LV, PL-1LW, PL-1LX, PL-1LY, PL-1LZ, PL-1MA, PL-1MB, PL-1MC, PL-1MD, PL-1ME, PL-1MF, PL-1MG, PL-1MH, PL-1MI, PL-1MJ, PL-1MK, PL-1ML, PL-1MM, PL-1MN, PL-1MO, PL-1MP, PL-1MQ, PL-1MR, PL-1MS, PL-1MT, PL-1MU, PL-1MV, PL-1MW, PL-1MX, PL-1MY, PL-1MZ, PL-1NA, PL-1NB, PL-1NC, PL-1ND, PL-1NE, PL-1NF, PL-1NG, PL-1NH, PL-1NI, PL-1NJ, PL-1NK, PL-1NL, PL-1NM, PL-1NN, PL-1NO, PL-1NP, PL-1NQ, PL-1NR, PL-1NS, PL-1NT, PL-1NU, PL-1NV, PL-1NW, PL-1NX, PL-1NY, PL-1NZ, PL-1OA, PL-1OB, PL-1OC, PL-1OD, PL-1OE, PL-1OF, PL-1OG, PL-1OH, PL-1OI, PL-1OJ, PL-1OK, PL-1OL, PL-1OM, PL-1ON, PL-1OO, PL-1OP, PL-1OQ, PL-1OR, PL-1OS, PL-1OT, PL-1OU, PL-1OV, PL-1OW, PL-1OX, PL-1OY, PL-1OZ, PL-1PA, PL-1PB, PL-1PC, PL-1PD, PL-1PE, PL-1PF, PL-1PG, PL-1PH, PL-1PI, PL-1PJ, PL-1PK, PL-1PL, PL-1PM, PL-1PN, PL-1PO, PL-1PP, PL-1PQ, PL-1PR, PL-1PS, PL-1PT, PL-1PU, PL-1PV, PL-1PW, PL-1PX, PL-1PY, PL-1PZ, PL-1QA, PL-1QB, PL-1QC, PL-1QD, PL-1QE, PL-1QF, PL-1QG, PL-1QH, PL-1QI, PL-1QJ, PL-1QK, PL-1QL, PL-1QM, PL-1QN, PL-1QO, PL-1QP, PL-1QQ, PL-1QR, PL-1QS, PL-1QT, PL-1QU, PL-1QV, PL-1QW, PL-1QX, PL-1QY, PL-1QZ, PL-1RA, PL-1RB, PL-1RC, PL-1RD, PL-1RE, PL-1RF, PL-1RG, PL-1RH, PL-1RI, PL-1RJ, PL-1RK, PL-1RL, PL-1RM, PL-1RN, PL-1RO, PL-1RP, PL-1RQ, PL-1RR, PL-1RS, PL-1RT, PL-1RU, PL-1RV, PL-1RW, PL-1RX, PL-1RY, PL-1RZ, PL-1SA, PL-1SB, PL-1SC, PL-1SD, PL-1SE, PL-1SF, PL-1SG, PL-1SH, PL-1SI, PL-1SJ, PL-1SK, PL-1SL, PL-1SM, PL-1SN, PL-1SO, PL-1SP, PL-1SQ, PL-1SR, PL-1SS, PL-1ST, PL-1SU, PL-1SV, PL-1SW, PL-1SX, PL-1SY, PL-1SZ, PL-1TA, PL-1TB, PL-1TC, PL-1TD, PL-1TE, PL-1TF, PL-1TG, PL-1TH, PL-1TI, PL-1TJ, PL-1TK, PL-1TL, PL-1TM, PL-1TN, PL-1TO, PL-1TP, PL-1TQ, PL-1TR, PL-1TS, PL-1TT, PL-1TU, PL-1TV, PL-1TW, PL-1TX, PL-1TY, PL-1TZ, PL-1UA, PL-1UB, PL-1UC, PL-1UD, PL-1UE, PL-1UF, PL-1UG, PL-1UH, PL-1UI, PL-1UJ, PL-1UK, PL-1UL, PL-1UM, PL-1UN, PL-1UO, PL-1UP, PL-1UQ, PL-1UR, PL-1US, PL-1UT, PL-1UU, PL-1UV, PL-1UW, PL-1UX, PL-1UY, PL-1UZ, PL-1VA, PL-1VB, PL-1VC, PL-1VD, PL-1VE, PL-1VF, PL-1VG, PL-1VH, PL-1VI, PL-1VJ, PL-1VK, PL-1VL, PL-1VM, PL-1VN, PL-1VO, PL-1VP, PL-1VQ, PL-1VR, PL-1VS, PL-1VT, PL-1VU, PL-1VV, PL-1VW, PL-1VX, PL-1VY, PL-1VZ, PL-1WA, PL-1WB, PL-1WC, PL-1WD, PL-1WE, PL-1WF, PL-1WG, PL-1WH, PL-1WI, PL-1WJ, PL-1WK, PL-1WL, PL-1WM, PL-1WN, PL-1WO, PL-1WP, PL-1WQ, PL-1WR, PL-1WS, PL-1WT, PL-1WU, PL-1WV, PL-1WW, PL-1WX, PL-1WY, PL-1WZ, PL-1XA, PL-1XB, PL-1XC, PL-1XD, PL-1XE, PL-1XF, PL-1XG, PL-1XH, PL-1XI, PL-1XJ, PL-1XK, PL-1XL, PL-1XM, PL-1XN, PL-1XO, PL-1XP, PL-1XQ, PL-1XR, PL-1XS, PL-1XT, PL-1XU, PL-1XV, PL-1XW, PL-1XX, PL-1XY, PL-1XZ, PL-1YA, PL-1YB, PL-1YC, PL-1YD, PL-1YE, PL-1YF, PL-1YG, PL-1YH, PL-1YI, PL-1YJ, PL-1YK, PL-1YL, PL-1YM, PL-1YN, PL-1YO, PL-1YP, PL-1YQ, PL-1YR, PL-1YS, PL-1YT, PL-1YU, PL-1YV, PL-1YW, PL-1YX, PL-1YY, PL-1YZ, PL-1ZA, PL-1ZB, PL-1ZC, PL-1ZD, PL-1ZE, PL-1ZF, PL-1ZG, PL-1ZH, PL-1ZI, PL-1ZJ, PL-1ZK, PL-1ZL, PL-1ZM, PL-1ZN, PL-1ZO, PL-1ZP, PL-1ZQ, PL-1ZR, PL-1ZS, PL-1ZT, PL-1ZU, PL-1ZV, PL-1ZW, PL-1ZX, PL-1ZY, PL-1ZZ.

FRAMER NOTE:

1. GLUE AND NAIL PLYWOOD SUBFLOOR TO BEAMS AND GIRDERS AT 6" O/C WHERE NO WALL IS ABOVE.
2. BEFORE SETTING JOIST IN HANGER, FILL ROUND HOLES WITH NAILS.

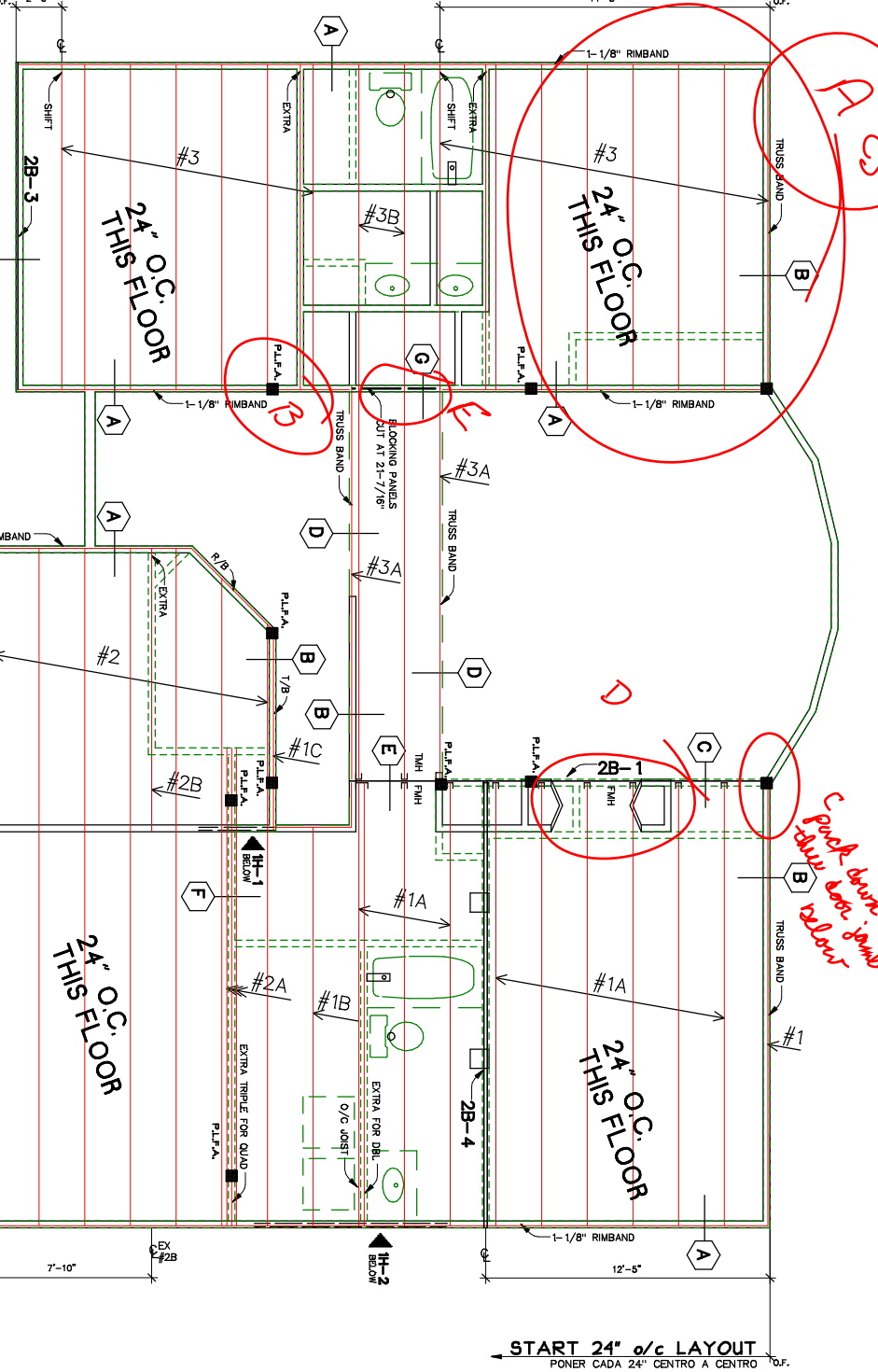
FRAMER NOTE:

1. AT FIRST FLOOR WALLS BELOW, DROP TOP PLATE FOR 1" JOISTS OVER GARAGE EN LAS PAREDES DEL PRIMER PISO, BAJAR EL PLATO 2" EN PAREDES CRUSADAS PARA JOISTS DE 16 SOBRE GARAGE.

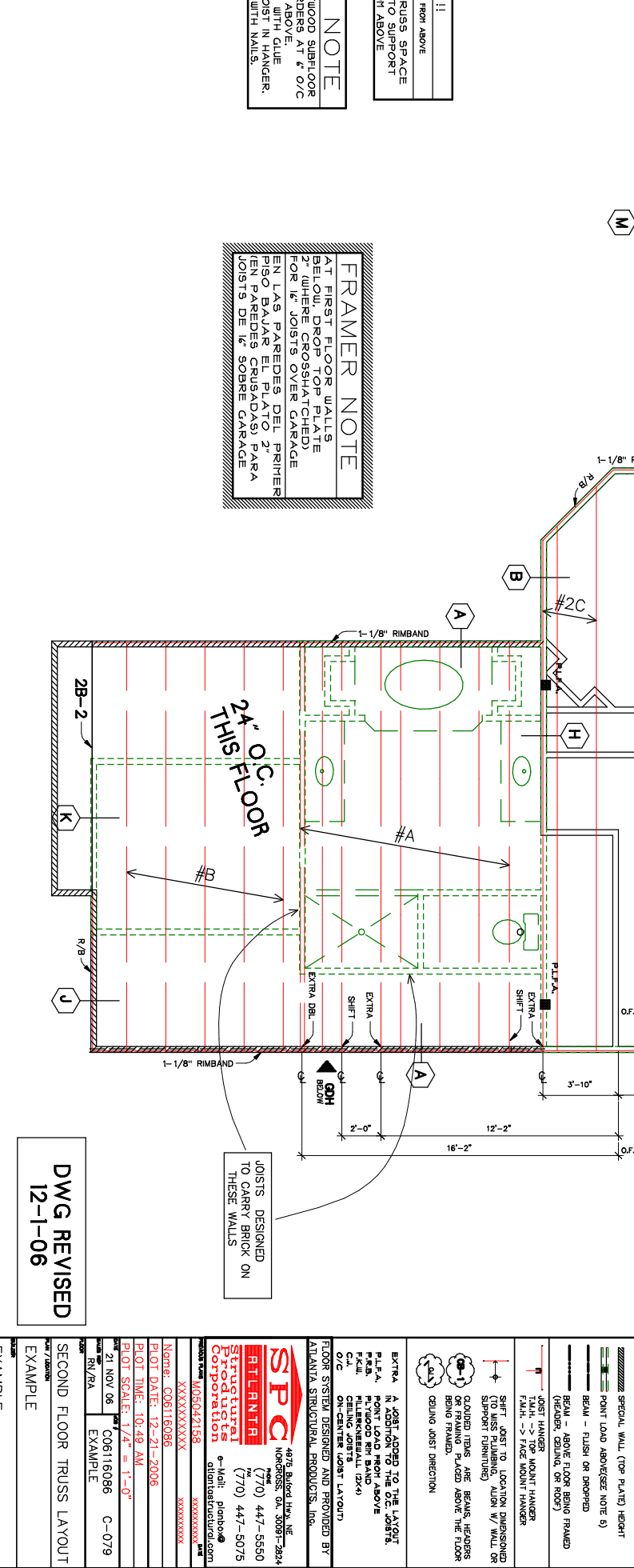
CRITICAL !!

PL-1A - POINT LOAD FROM ABOVE

PACK STUDS IN TRUSS SPACE AND WALL BELOW TO SUPPORT POINT LOAD FROM ABOVE



START 24\"/>



JOISTS DESIGNED TO CARRY BRICK ON THESE WALLS

DWG REVISED 12-1-06

EXAMPLE

EXAMPLE

SPC
 4075 Blvd Hwy. NE
 Norcross, GA 30092-2824
 (770) 447-5550
 (770) 447-5075
 www.spc.com
 Atlanta Structural Products, Inc.

Structural
 4075 Blvd Hwy. NE
 Norcross, GA 30092-2824
 (770) 447-5550
 (770) 447-5075
 www.structural.com
 Atlanta Structural Products, Inc.

PL-1A
 POINT LOAD FROM ABOVE

PL-1B
 POINT LOAD FROM ABOVE

PL-1C
 POINT LOAD FROM ABOVE

PL-1D
 POINT LOAD FROM ABOVE

PL-1E
 POINT LOAD FROM ABOVE

PL-1F
 POINT LOAD FROM ABOVE

PL-1G
 POINT LOAD FROM ABOVE

PL-1H
 POINT LOAD FROM ABOVE

PL-1I
 POINT LOAD FROM ABOVE

PL-1J
 POINT LOAD FROM ABOVE

PL-1K
 POINT LOAD FROM ABOVE

PL-1L
 POINT LOAD FROM ABOVE

PL-1M
 POINT LOAD FROM ABOVE

PL-1N
 POINT LOAD FROM ABOVE

PL-1O
 POINT LOAD FROM ABOVE

PL-1P
 POINT LOAD FROM ABOVE

PL-1Q
 POINT LOAD FROM ABOVE

PL-1R
 POINT LOAD FROM ABOVE

PL-1S
 POINT LOAD FROM ABOVE

PL-1T
 POINT LOAD FROM ABOVE

PL-1U
 POINT LOAD FROM ABOVE

PL-1V
 POINT LOAD FROM ABOVE

PL-1W
 POINT LOAD FROM ABOVE

PL-1X
 POINT LOAD FROM ABOVE

PL-1Y
 POINT LOAD FROM ABOVE

PL-1Z
 POINT LOAD FROM ABOVE

PL-1AA
 POINT LOAD FROM ABOVE

PL-1AB
 POINT LOAD FROM ABOVE

PL-1AC
 POINT LOAD FROM ABOVE

PL-1AD
 POINT LOAD FROM ABOVE

PL-1AE
 POINT LOAD FROM ABOVE

PL-1AF
 POINT LOAD FROM ABOVE

PL-1AG
 POINT LOAD FROM ABOVE

PL-1AH
 POINT LOAD FROM ABOVE

PL-1AI
 POINT LOAD FROM ABOVE

PL-1AJ
 POINT LOAD FROM ABOVE

PL-1AK
 POINT LOAD FROM ABOVE

PL-1AL
 POINT LOAD FROM ABOVE

PL-1AM
 POINT LOAD FROM ABOVE

PL-1AN
 POINT LOAD FROM ABOVE

PL-1AO
 POINT LOAD FROM ABOVE

PL-1AP
 POINT LOAD FROM ABOVE

PL-1AQ
 POINT LOAD FROM ABOVE

PL-1AR
 POINT LOAD FROM ABOVE

PL-1AS
 POINT LOAD FROM ABOVE

PL-1AT
 POINT LOAD FROM ABOVE

PL-1AU
 POINT LOAD FROM ABOVE

PL-1AV
 POINT LOAD FROM ABOVE

PL-1AW
 POINT LOAD FROM ABOVE

PL-1AX
 POINT LOAD FROM ABOVE

PL-1AY
 POINT LOAD FROM ABOVE

PL-1AZ
 POINT LOAD FROM ABOVE

PL-1BA
 POINT LOAD FROM ABOVE

PL-1BB
 POINT LOAD FROM ABOVE

PL-1BC
 POINT LOAD FROM ABOVE

PL-1BD
 POINT LOAD FROM ABOVE

PL-1BE
 POINT LOAD FROM ABOVE

PL-1BF
 POINT LOAD FROM ABOVE

PL-1BG
 POINT LOAD FROM ABOVE

PL-1BH
 POINT LOAD FROM ABOVE

PL-1BI
 POINT LOAD FROM ABOVE

PL-1BJ
 POINT LOAD FROM ABOVE

PL-1BK
 POINT LOAD FROM ABOVE

PL-1BL
 POINT LOAD FROM ABOVE

PL-1BM
 POINT LOAD FROM ABOVE

PL-1BN
 POINT LOAD FROM ABOVE

PL-1BO
 POINT LOAD FROM ABOVE

PL-1BP
 POINT LOAD FROM ABOVE

PL-1BQ
 POINT LOAD FROM ABOVE

PL-1BR
 POINT LOAD FROM ABOVE

PL-1BS
 POINT LOAD FROM ABOVE

PL-1BT
 POINT LOAD FROM ABOVE

PL-1BU
 POINT LOAD FROM ABOVE

PL-1BV
 POINT LOAD FROM ABOVE

PL-1BW
 POINT LOAD FROM ABOVE

PL-1BX
 POINT LOAD FROM ABOVE

PL-1BY
 POINT LOAD FROM ABOVE

PL-1BZ
 POINT LOAD FROM ABOVE

PL-1CA
 POINT LOAD FROM ABOVE

PL-1CB
 POINT LOAD FROM ABOVE

PL-1CC
 POINT LOAD FROM ABOVE

PL-1CD
 POINT LOAD FROM ABOVE

PL-1CE
 POINT LOAD FROM ABOVE

PL-1CF
 POINT LOAD FROM ABOVE

PL-1CG
 POINT LOAD FROM ABOVE

PL-1CH
 POINT LOAD FROM ABOVE

PL-1CI
 POINT LOAD FROM ABOVE

PL-1CJ
 POINT LOAD FROM ABOVE

PL-1CK
 POINT LOAD FROM ABOVE

PL-1CL
 POINT LOAD FROM ABOVE

PL-1CM
 POINT LOAD FROM ABOVE

PL-1CN
 POINT LOAD FROM ABOVE

PL-1CO
 POINT LOAD FROM ABOVE

PL-1CP
 POINT LOAD FROM ABOVE

PL-1CQ
 POINT LOAD FROM ABOVE

PL-1CR
 POINT LOAD FROM ABOVE

PL-1CS
 POINT LOAD FROM ABOVE

PL-1CT
 POINT LOAD FROM ABOVE

PL-1CU
 POINT LOAD FROM ABOVE

PL-1CV
 POINT LOAD FROM ABOVE

PL-1CW
 POINT LOAD FROM ABOVE

PL-1CX
 POINT LOAD FROM ABOVE

PL-1CY
 POINT LOAD FROM ABOVE

PL-1CZ
 POINT LOAD FROM ABOVE

PL-1DA
 POINT LOAD FROM ABOVE

PL-1DB
 POINT LOAD FROM ABOVE

PL-1DC
 POINT LOAD FROM ABOVE

PL-1DD
 POINT LOAD FROM ABOVE

PL-1DE
 POINT LOAD FROM ABOVE

PL-1DF
 POINT LOAD FROM ABOVE

PL-1DG
 POINT LOAD FROM ABOVE

PL-1DH
 POINT LOAD FROM ABOVE

PL-1DI
 POINT LOAD FROM ABOVE

PL-1DJ
 POINT LOAD FROM ABOVE

PL-1DK
 POINT LOAD FROM ABOVE

PL-1DL
 POINT LOAD FROM ABOVE

PL-1DM
 POINT LOAD FROM ABOVE

PL-1DN
 POINT LOAD FROM ABOVE

PL-1DO
 POINT LOAD FROM ABOVE

PL-1DP
 POINT LOAD FROM ABOVE

PL-1DQ
 POINT LOAD FROM ABOVE

PL-1DR
 POINT LOAD FROM ABOVE

PL-1DS
 POINT LOAD FROM ABOVE

PL-1DT
 POINT LOAD FROM ABOVE

PL-1DU
 POINT LOAD FROM ABOVE

PL-1DV
 POINT LOAD FROM ABOVE

PL-1DW
 POINT LOAD FROM ABOVE

PL-1DX
 POINT LOAD FROM ABOVE

PL-1DY
 POINT LOAD FROM ABOVE

PL-1DZ
 POINT LOAD FROM ABOVE

PL-1EA
 POINT LOAD FROM ABOVE

PL-1EB
 POINT LOAD FROM ABOVE

PL-1EC
 POINT LOAD FROM ABOVE

PL-1ED
 POINT LOAD FROM ABOVE

PL-1EE
 POINT LOAD FROM ABOVE

PL-1EF
 POINT LOAD FROM ABOVE

PL-1EG
 POINT LOAD FROM ABOVE

PL-1EH
 POINT LOAD FROM ABOVE

PL-1EI
 POINT LOAD FROM ABOVE

PL-1EJ
 POINT LOAD FROM ABOVE

PL-1EK
 POINT LOAD FROM ABOVE

PL-1EL
 POINT LOAD FROM ABOVE

PL-1EM
 POINT LOAD FROM ABOVE

PL-1EN
 POINT LOAD FROM ABOVE

PL-1EO
 POINT LOAD FROM ABOVE

PL-1EP
 POINT LOAD FROM ABOVE

PL-1EQ
 POINT LOAD FROM ABOVE

PL-1ER
 POINT LOAD FROM ABOVE

PL-1ES
 POINT LOAD FROM ABOVE

PL-1ET
 POINT LOAD FROM ABOVE

PL-1EU
 POINT LOAD FROM ABOVE

PL-1EV
 POINT LOAD FROM ABOVE

PL-1EW
 POINT LOAD FROM ABOVE

PL-1EX
 POINT LOAD FROM ABOVE

PL-1EY
 POINT LOAD FROM ABOVE

PL-1EZ
 POINT LOAD FROM ABOVE

PL-1FA
 POINT LOAD FROM ABOVE

PL-1FB
 POINT LOAD FROM ABOVE

PL-1FC
 POINT LOAD FROM ABOVE

PL-1FD
 POINT LOAD FROM ABOVE

PL-1FE
 POINT LOAD FROM ABOVE

PL-1FF
 POINT LOAD FROM ABOVE

PL-1FG
 POINT LOAD FROM ABOVE

PL-1FH
 POINT LOAD FROM ABOVE

PL-1FI
 POINT LOAD FROM ABOVE

PL-1FJ
 POINT LOAD FROM ABOVE

PL-1FK
 POINT LOAD FROM ABOVE

PL-1FL
 POINT LOAD FROM ABOVE

PL-1FM
 POINT LOAD FROM ABOVE

PL-1FN
 POINT LOAD FROM ABOVE

PL-1FO
 POINT LOAD FROM ABOVE

PL-1FP
 POINT LOAD FROM ABOVE

PL-1FQ
 POINT LOAD FROM ABOVE

PL-1FR
 POINT LOAD FROM ABOVE

PL-1FS
 POINT LOAD FROM ABOVE

PL-1FT
 POINT LOAD FROM ABOVE

PL-1FU
 POINT LOAD FROM ABOVE

PL-1FV
 POINT LOAD FROM ABOVE

PL-1FW
 POINT LOAD FROM ABOVE

PL-1FX
 POINT LOAD FROM ABOVE

PL-1FY
 POINT LOAD FROM ABOVE

PL-1FZ
 POINT LOAD FROM ABOVE

PL-1GA
 POINT LOAD FROM ABOVE

PL-1GB
 POINT LOAD FROM ABOVE

PL-1GC
 POINT LOAD FROM ABOVE

PL-1GD
 POINT LOAD FROM ABOVE

PL-1GE
 POINT LOAD FROM ABOVE

PL-1GF
 POINT LOAD FROM ABOVE

PL-1GG
 POINT LOAD FROM ABOVE

PL-1GH
 POINT LOAD FROM ABOVE

PL-1GI
 POINT LOAD FROM ABOVE

PL-1GJ
 POINT LOAD FROM ABOVE

PL-1GK
 POINT LOAD FROM ABOVE

PL-1GL
 POINT LOAD FROM ABOVE

PL-1GM
 POINT LOAD FROM ABOVE

PL-1GN
 POINT LOAD FROM ABOVE

PL-1GO
 POINT LOAD FROM ABOVE

PL-1GP
 POINT LOAD FROM ABOVE

PL-1GQ
 POINT LOAD FROM ABOVE

PL-1GR
 POINT LOAD FROM ABOVE

PL-1GS
 POINT LOAD FROM ABOVE

PL-1GT
 POINT LOAD FROM ABOVE

PL-1GU
 POINT LOAD FROM ABOVE

PL-1GV
 POINT LOAD FROM ABOVE

PL-1GW
 POINT LOAD FROM ABOVE

PL-1GX
 POINT LOAD FROM ABOVE

PL-1GY
 POINT LOAD FROM ABOVE

PL-1GZ
 POINT LOAD FROM ABOVE

PL-1HA
 POINT LOAD FROM ABOVE

PL-1HB
 POINT LOAD FROM ABOVE

PL-1HC
 POINT LOAD FROM ABOVE

PL-1HD<